

Learning Solutions - 45 Series



45-SD303630R-227044-S w/Trolley



45-SD303630R-227044-S w/FPA



Edge detail

Dataport

Trolley Technology

Downview Technology

Keyboard Options

Productivity + Value = Endless Possibilities



Series **Features**

- *Technology options for flat panel displays and CRT monitors*
- *1 1/8" thick thermofused laminate work surfaces*
- *Flat (2mm) edge detail*
- *Total Access™ removable modesty panels*
- *Power, data and cable management*

45



Features, Benefits and Solutions

Product Benefits & Solutions

- Patented technology solutions integrated into casegoods
- Unique, multifaceted solutions for all types of learning environments
- Thermofused laminate tops and bases with flat PVC edge banding
- Effective solutions for both students and instructors
- Variety of sizes to fit any room layout
- ADA compliant desks available
- Total Access™ removable modesty panels for access to computer cabling
- Wire management system and power strip included
- Extensive array of filing and storage options
- Custom capabilities to meet any customer's needs
- Wide range of standard laminate colors available
- Edge banding colors to match all standard laminate colors
- Select Quick Ship items and colors, 10-day lead-time
- Made in the U.S.A.

How To Order

1. Select model number

Ex: 45-SD243630RX

- A select offering of **left-handed units** are listed.
For additional left-handed units, call Customer Support: 1-800-730-6682
- For **ADA Height** unit, change height from 30 to **32** in model number and add \$80 for single desk and \$120 for double desk. Ex: 45-SD2436**32**RX

2. Select laminate base and work surface color (see page 136)

Ex: 227 044
Base Work
Surface

3. Optional-Select visual display options (see page 95)

Ex: TH0721NK (The Trolley H-Class with Nova keyboard drawer)

4. Optional-Select essential accessory options (see page 34)

Ex: 11205DP (Standard data port)

5. Optional-Upgrade to high pressure laminate work surface

Ex: Z **-Add 15% to List Price for this option.**

- All locking units can be keyed alike. Please note on purchase order.

Model Number Structure:



45-SD243630RX

45 -
Series

SD **243630**
Type Size
D x W x H

R

X
CPU Door
Indicator
X-No Locking
CPU Door
D-With Locking
CPU Door

Type
SD-Single desk
DD-Double desk
AD-ADA Compliant
ST-Split top

CPU Location
R-Right
L-Left
C-Center
X-No CPU
Shelf

NOTE:

See full listing of all "types" and last two letters on page 41.

Visual Display Options To order, see page 95.

The Trolley™ H-Class Personal Monitor Arm System

Maximum dimensions for flat panel display:

2¾" D x 16¼" W x 14" H (70mm D x 413mm W x 356mm H)

NOTE: Maximum distance from center of wall mount VESA plate to bottom of monitor is 6 ¾" (171mm)

- Provides flexible, mainstream flat screen location when raised
- Low voltage motor to lift and lower monitor
- Intelligent Motion Technology™ provides operational intuition
- Clears line-of-sight when submerged
- Allows for multi-use workstations and classrooms
- Keyed lock provides added security and control in any environment
- Hides confidential information when necessary
- Reduces the risk of damage to flat panels displays
- Creates a clean, uncluttered look in the classroom or office
- Reduces the risk of damage to computer equipment
- Provides clean, ergonomical solutions
- Manage technology in your workspace environment

Downview - Flat Panel Display & CRT Monitor

Maximum dimensions for flat panel display-

18x18 view port: 17"W x 18"H (432mm W x 457.2mm H);

21x21 view port: 20⅞"W x 19" H (511mm W x 483mm H)

Maximum dimensions for CRT monitor-

18x21 view port: 17½"D x 17"W x 18"H (444mm D x 432mm W x 457mm H)

21x24 view port: 23½"D x 20⅞"W x 19" H (597mm D x 511mm W x 483mm H)

- Keeps monitor under glass below work surface
- Allows for multi-use working and learning environments
- Proven to be ergonomically beneficial, increase productivity
- Saves premium classroom and desktop space
- Hides confidential information
- Creates a clean, uncluttered look in the classroom or office
- Reduces the risk of damage to computer equipment

Surface Mount Flat Panel Display

Maximum weight for flat panel display: 21 lbs.

Maximum dimensions for flat panel display: Up to 24" diagonal wide screen

- Allows for multi-use working and learning environments
- Proven to be ergonomically beneficial, increase productivity
- Saves premium classroom and desktop space
- Creates a clean, uncluttered look in the classroom or office
- Reduces the risk of damage to computer equipment
- Height and tilt adjustable

Grommets

Grommets are rectangular black plastic.

Work Surface Edge Detail

Flat PVC edge



Quick Ship Colors

Work Surface: Grey Nebula, Hard Rock Maple & Wild Cherry

Base: Fashion Grey, Black & Wild Cherry

To order, specify:

1. Model number
2. Colors for laminate base and work surface
3. Optional-Select visual display options
4. Optional-Select essential accessory options

Workstations-Monitor LEFT

**Monitor LEFT
CPU storage right**
For right-handed users

Suggested Keyboard Width:
30W Unit = 28" KB
32W Unit = 30" KB
36W Unit = 34" KB
42W Unit = 34" KB
48W Unit = 34" KB

CPU Storage Width:
30W Unit = 7-7/8"
32W Unit = 9-7/8"
36W Unit = 11-1/4"
42W Unit = 14-7/8"
48W Unit = 20-7/8"



- Available with contoured end panels (Specify "S")
- Available with castors (Specify "C")

D x W x H (in.)	ft ³ / lbs	Model	List Price
24 x 30 x 30	13 / 109	45-SD243030RX	\$474
24 x 32 x 30	13 / 111	45-SD243230RX	\$500
24 x 36 x 30	15 / 113	45-SD243630RX	\$509
24 x 42 x 30	18 / 117	45-SD244230RX	\$661
24 x 48 x 30	20 / 125	45-SD244830RX	\$716
30 x 30 x 30	16 / 117	45-SD303030RX	\$526
30 x 32 x 30	17 / 119	45-SD303230RX	\$553
30 x 36 x 30	19 / 123	45-SD303630RX	\$561
30 x 42 x 30	22 / 131	45-SD304230RX	\$713
30 x 48 x 30	25 / 154	45-SD304830RX	\$768
36 x 36 x 30	23 / 144	45-SD363630RX	\$777
36 x 42 x 30	26 / 158	45-SD364230RX	\$858
36 x 48 x 30	30 / 210	45-SD364830RX	\$910

Workstations-Monitor RIGHT

**Monitor RIGHT
CPU storage left**
For left-handed users

Suggested Keyboard Width:
30W Unit = 28" KB
32W Unit = 30" KB
36W Unit = 34" KB
42W Unit = 34" KB
48W Unit = 34" KB

CPU Storage Width:
30W Unit = 7-7/8"
32W Unit = 9-7/8"
36W Unit = 11-1/4"
42W Unit = 14-7/8"
48W Unit = 20-7/8"



- Available with contoured end panels (Specify "S")
- Available with castors (Specify "C")

24 x 30 x 30	13 / 109	45-SD243030LX	\$474
24 x 32 x 30	13 / 111	45-SD243230LX	\$500
24 x 36 x 30	15 / 113	45-SD243630LX	\$509
24 x 42 x 30	18 / 117	45-SD244230LX	\$661
24 x 48 x 30	18 / 117	45-SD244830LX	\$716
30 x 30 x 30	16 / 117	45-SD303030LX	\$526
30 x 32 x 30	17 / 119	45-SD303230LX	\$553
30 x 36 x 30	19 / 123	45-SD303630LX	\$561
30 x 42 x 30	22 / 131	45-SD304230LX	\$713
30 x 48 x 30	25 / 154	45-SD304830LX	\$768

Elementary Workstations Monitor LEFT

**Monitor LEFT
CPU storage right**
For right-handed users

Suggested Keyboard Width:
30W Unit = 28" KB
32W Unit = 30" KB
36W Unit = 34" KB
42W Unit = 34" KB
48W Unit = 34" KB

CPU Storage Width:
30W Unit = 7-7/8"
32W Unit = 9-7/8"
36W Unit = 11-1/4"
42W Unit = 14-7/8"
48W Unit = 20-7/8"



- Available with contoured end panels (Specify "S")

24 x 30 x 27	11 / 107	45-SD243027RX	\$416
24 x 32 x 27	12 / 109	45-SD243227RX	\$458
24 x 36 x 27	14 / 111	45-SD243627RX	\$470
24 x 42 x 27	16 / 115	45-SD244227RX	\$605
24 x 48 x 27	18 / 123	45-SD244827RX	\$655
30 x 30 x 27	15 / 114	45-SD303027RX	\$526
30 x 32 x 27	16 / 116	45-SD303227RX	\$553
30 x 36 x 27	18 / 120	45-SD303627RX	\$561
30 x 42 x 27	21 / 128	45-SD304227RX	\$713
30 x 48 x 27	24 / 151	45-SD304827RX	\$768
36 x 36 x 27	21 / 140	45-SD363627RX	\$777
36 x 42 x 27	24 / 154	45-SD364227RX	\$858
36 x 48 x 27	28 / 206	45-SD364827RX	\$910

Visual Display Options available:

- The Trolley H-Class™
- Downview-Flat Panel Display
- Surface Mount Flat Panel Display
- Downview-CRT Monitor

Elementary Workstations Monitor RIGHT

**Monitor RIGHT
CPU storage left**
For left-handed users

Suggested Keyboard Width:
30W Unit = 28" KB
32W Unit = 30" KB

CPU Storage Width:
30W Unit = 7-7/8"
32W Unit = 9-7/8"



- Available with contoured end panels (Specify "S")

D x W x H (in.)	ft ³ / lbs	Model	List Price
24 x 30 x 27	11 / 107	45-SD243027LX	\$416
24 x 32 x 27	12 / 109	45-SD243227LX	\$458
24 x 36 x 27	14 / 111	45-SD243627LX	\$470
24 x 42 x 27	16 / 115	45-SD244227LX	\$605
24 x 48 x 27	18 / 123	45-SD244827LX	\$655
30 x 30 x 27	15 / 114	45-SD303027LX	\$526
30 x 32 x 27	16 / 116	45-SD303227LX	\$553
30 x 36 x 27	18 / 120	45-SD303627LX	\$561
30 x 42 x 27	21 / 128	45-SD304227LX	\$713
30 x 48 x 27	24 / 151	45-SD304827LX	\$768

Workstations - Monitor CENTER

**Monitor CENTER
CPU storage right**
For right-handed users

Suggested Keyboard Width:
34"

CPU Storage Width:
10-1/8"



- Available with contoured end panels (Specify "S")
- Available with castors (Specify "C")

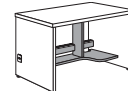
24 x 48 x 30	20 / 125	45-SD244830RXC	\$792
30 x 48 x 30	25 / 156	45-SD304830RXC	\$844
36 x 48 x 30	30 / 213	45-SD364830RXC	\$998

ADA Compliant Workstation - Monitor CENTER

**Monitor CENTER
CPU storage right**
For right-handed users

Suggested Keyboard Width:
34"

CPU Storage Width:
10-1/8"



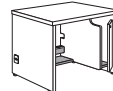
30 x 48 x 32	27 / 160	45-AD304832RXC	\$848
--------------	----------	----------------	-------

Workstations - Monitor LEFT With Locking Doors

**Monitor LEFT
CPU storage right**
For right-handed users

Suggested Keyboard Width:
34"

CPU Storage Width:
36W Unit = 11-1/4"
42W Unit = 14-7/8"
48W Unit = 20-7/8"



24 x 36 x 30	15 / 115	45-SD243630RD	\$783
24 x 42 x 30	18 / 119	45-SD244230RD	\$936
24 x 48 x 30	20 / 127	45-SD244830RD	\$956
30 x 36 x 30	19 / 125	45-SD303630RD	\$835
30 x 42 x 30	22 / 133	45-SD304230RD	\$988
30 x 48 x 30	25 / 156	45-SD304830RD	\$1,008
36 x 36 x 30	23 / 146	45-SD363630RD	\$1,008
36 x 42 x 30	26 / 160	45-SD364230RD	\$1,191
36 x 48 x 30	30 / 212	45-SD364830RD	\$1,202

How To Order

1. Select model number

Ex: 45-SD243630RX

- A select offering of **left-handed units** are listed.
For additional left-handed units, call Customer Support: 1-800-730-6682.
- For **ADA Height** unit, change height from 30 to **32** in model number and add \$80 for single desk and \$120 for double desk. Ex: 45-SD2436**32**RX

2. Select laminate colors for base and work surface (see page 136)

Ex: 227 044
base work
surface

3. Optional-Select visual display options (see page 95)

Ex: TH0721NK (The Trolley H-Class with Nova keyboard drawer)

4. Optional-Select essential accessory options (see page 34)

Ex: 11205DP (Standard data port)

5. Optional-Upgrade to high pressure laminate work surface

Ex: Z **-Add 15% to List Price for this option.**

- All locking units can be keyed alike. Please note on purchase order.**

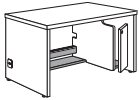
Workstations - Monitor CENTER With Locking Doors

**Monitor CENTER
CPU storage right**
For right-handed users

Suggested Keyboard Width: 34"
CPU Storage Width: 10-1/8"
Interior Depth of CPU Storage:
24" D Unit only = 18-9/16"

- Available with castors (Specify "C")

D x W x H (in.)	ft ³ / lbs	Model	List Price
24 x 48 x 30	20 / 127	45-SD244830RDC	\$969
30 x 48 x 30	25 / 158	45-SD304830RDC	\$1,021
36 x 48 x 30	30 / 215	45-SD364830RDC	\$1,209



Double Monitor Workstations Monitors LEFT

**Monitor LEFT in
workspace
CPU storage right**
For (2) right-handed users

Suggested Keyboard Width:
59W Unit: 28" KB
63W Unit: 30" KB
71W Unit: 34" KB
CPU Storage Width:
59W Unit: 7-7/8"
63W Unit: 9-9/16"
71W Unit: 12"

- Available with contoured end panels. (Specify "S")

24 x 59 x 30	25 / 210	45-DD245930RX	\$921
24 x 63 x 30	26 / 214	45-DD246330RX	\$974
24 x 71 x 30	30 / 218	45-DD247130RX	\$1,031
30 x 59 x 30	31 / 217	45-DD305930RX	\$1,013
30 x 63 x 30	33 / 221	45-DD306330RX	\$1,066
30 x 71 x 30	37 / 225	45-DD307130RX	\$1,083
36 x 71 x 30	44 / 263	45-DD367130RX	\$1,346



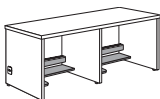
Double Monitor Workstations Monitors RIGHT

**Monitor RIGHT in
workspace
CPU storage right**
For (2) right-handed users

Suggested Keyboard Width:
59W Unit: 28" KB
63W Unit: 30" KB
71W Unit: 34" KB
CPU Storage Width:
59W Unit: 7-7/8"
63W Unit: 9-9/16"
71W Unit: 12"

- Available with contoured end panels (Specify "S")

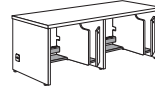
24 x 59 x 30	25 / 210	45-DD245930LX	\$921
24 x 63 x 30	26 / 214	45-DD246330LX	\$974
24 x 71 x 30	30 / 218	45-DD247130LX	\$1,031
30 x 59 x 30	31 / 217	45-DD305930LX	\$1,013
30 x 63 x 30	33 / 221	45-DD306330LX	\$1,066
30 x 71 x 30	37 / 225	45-DD307130LX	\$1,083
36 x 71 x 30	44 / 263	45-DD367130LX	\$1,346



Double Monitor Workstations Monitors LEFT - With Locking Doors

**Monitor LEFT in
workspace
CPU storage right**
For (2) right-handed users

Suggested Keyboard Width: 34"
CPU Storage Width: 12-5/8"
Interior Depth of CPU Storage:
24" D Unit only = 18-9/16"

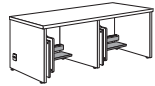


D x W x H (in.)	ft ³ / lbs	Model	List Price
24 x 71 x 30	30 / 222	45-DD247130RD	\$1,272
30 x 71 x 30	37 / 229	45-DD307130RD	\$1,324
36 x 71 x 30	44 / 267	45-DD367130RD	\$1,915

Double Monitor Workstations Monitors RIGHT - With Locking Doors

**Monitor RIGHT in
workspace
CPU storage left**
For (2) left-handed user

Suggested Keyboard Width: 34"
CPU Storage Width: 12-5/8"
Interior Depth of CPU Storage:
24" D Unit only = 18-9/16"

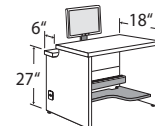


24 x 71 x 30	30 / 222	45-DD247130LD	\$1,272
30 x 71 x 30	37 / 229	45-DD307130LD	\$1,324
36 x 71 x 30	44 / 267	45-DD367130LD	\$2,015

Split Top Workstations

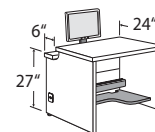
**Monitor LEFT
CPU storage right**
For right-handed users

Suggested Keyboard Width: 34"
CPU Storage Width:
36W Unit = 11-1/4"
42W Unit = 14-7/8"
48W Unit = 10-1/8"
60W Unit = 16-1/8"
66W Unit = 19-1/8"



6" D x 27" H shelf intended for a flat panel monitor with base.

24 x 36 x 30	19 / 123	45-ST243630RX	\$708
24 x 42 x 30	22 / 131	45-ST244230RX	\$883
24 x 48 x 30	25 / 154	45-ST244830RX	\$946
24 x 60 x 30	31 / 197	45-ST246030RX	\$1,046
24 x 66 x 30	34 / 218	45-ST246630RX	\$1,117



30 x 36 x 30	19 / 123	45-ST303630RX	\$760
30 x 42 x 30	22 / 131	45-ST304230RX	\$935
30 x 48 x 30	25 / 154	45-ST304830RX	\$998
30 x 60 x 30	31 / 197	45-ST306030RX	\$1,098
30 x 66 x 30	34 / 218	45-ST306630RX	\$1,169

Contoured end panels

Available on specified units.

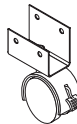
-S \$60



Castors

For Training desks

With stabilization bracket. Available on specified units.
When adding castors, the total height of the workstation will not change.



Set of 4 (Available on single wide workstations only)

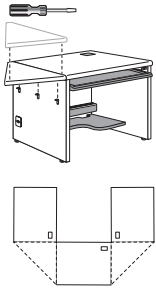
2⁵/₈ x 1³/₄ x 3¹/₄ -C \$80/set

To order, specify:

1. Model number
2. Colors for laminate base and work surface
3. Optional-Select visual display options
4. Optional-Select essential accessory options

Wedges

Wedges



D x W x H (in.)	ft ³ / lbs	Model	List Price
-----------------	-----------------------	-------	------------

Hardware included.

For 24" D units

90 Degree - Includes end panels. Must specify base and work surface color.

24 x 33 ¹⁵ / ₁₆ x 30		45-WG24333090	\$318
--	--	----------------------	--------------

For 30" D units

90 Degree - Includes end panels. Must specify base and work surface color.

30 x 42 ³ / ₁₆ x 30		45-WG30423090	\$339
---	--	----------------------	--------------

For 36" D units

90 Degree - Includes end panels. Must specify base and work surface color.

36 x 50 ¹¹ / ₁₆ x 30		45-WG36503090	\$365
--	--	----------------------	--------------

Visual Display Options available:

- The Trolley H-Class™
- Downview-Flat Panel Display
- Surface Mount Flat Panel Display
- Downview-CRT Monitor

Factory Installed Keyboard Options Only for 45 Series

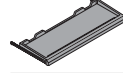
(Only ordered when NO Visual Display Options ordered)

D x W x H (in.)	ft ³ / lbs	Model	List Price
-----------------	-----------------------	-------	------------

Factory Installed Nova Keyboard

Keyboard length to fit casegoods ordered

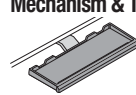
22" - 34" wide		NK	\$100
----------------	--	-----------	--------------



Factory Installed Center Mount Articulating Keyboard Mechanism & Tray

Keyboard length to fit casegoods ordered

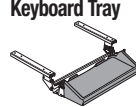
22" - 34" wide		CK	\$210
----------------	--	-----------	--------------



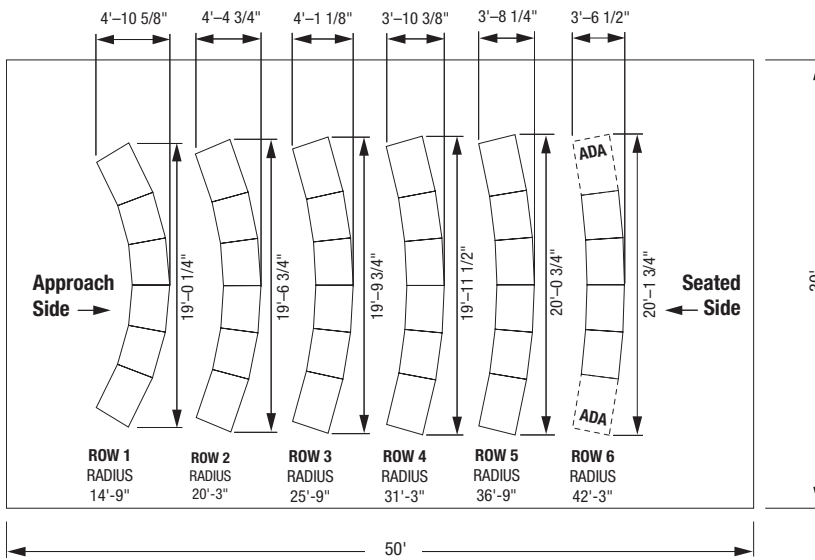
Factory Installed Dual-Mount Adjustable Keyboard Tray

Keyboard length to fit casegoods ordered

22" - 34" wide		AK	\$285
----------------	--	-----------	--------------



Electronic Classroom™



Sample Layout and Drawing

End units are larger than center units to accommodate adequate CPU storage. Desks are not designed to be used independently.



For drawing, specification and pricing assistance for your custom arc configuration, please contact Nova's Customer Support:

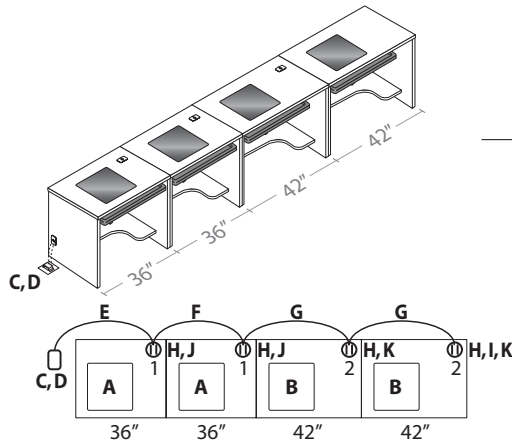
1-800-730-6682

How To Order - Hardwire-Standard Workstation

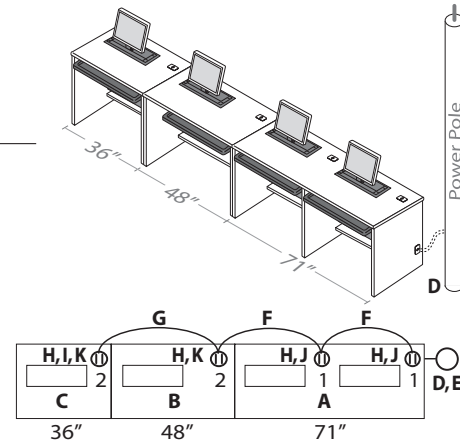
1. Select a standard workstation
2. Complete room layout with workstations
3. Select power entry (Floor, wall, ceiling)
4. Select liquid tite jumper length (For floor or wall. Ceiling always 144")
5. Select raceways with junction block
6. Include termination junction block
7. Select mounting bracket quantities for all junction blocks.
8. Select receptacles by circuit numbers.

NOTE: Mounting brackets with junction blocks and receptacles always located behind CPU storage.

Pricing Example with Wall/Floor Power



Pricing Example with Ceiling Power



Bill of Materials

- A. (2) - 45-SD303630RX..... 30"d x 36"w x 30"h work station
- B. (2) - 45-SD304230RX..... 30"d x 42"w x 30"h work station
- C. (1) - BE08496..... Power entry/Wall or floor
- D. (1) - BE08496..... Wall/floor power feed
- E. (1) - BE08682-2-60..... Liquid tite jumper 60" W
- F. (1) - BE08068-3-2-36..... Raceway with junction block, 36"W
- G. (2) - BE08068-3-2-42..... Raceway with junction block, 42"W
- H. (4) - BE08077..... Mounting bracket
- I. (1) - BE08381-3-2..... Termination junction block
- J. (2) - BE08065-3-A1C / BlackCircuit1..... Receptacle
- K. (2) - BE08065-3-A2C / BlackCircuit2..... Receptacle
- L. (4) - FPA1818NK..... Flat panel arm technology

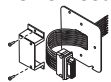
Bill of Materials

- A. (1) - 85-DD247130RX..... 24"d x 71"w x 30"h work station
- B. (1) - 85-SD244830RX..... 24"d x 48"w x 30"h work station
- C. (1) - 85-SD243630RX..... 24"d x 36"w x 30"h work station
- D. (1) - BE08092-3-144..... Ceiling power feed
- E. (1) - **Supplied by others**..... **Power pole**
- F. (2) - BE08068-3-2-36..... Raceway with junction block, 36"W
- G. (1) - BE08068-3-2-42..... Raceway with junction block, 42"W
- H. (4) - BE08077..... Mounting bracket
- I. (1) - BE08381-3-2..... Termination junction block
- J. (2) - BE08065-3-A1C / BlackCircuit1..... Receptacle
- K. (2) - BE08065-3-A2C / BlackCircuit2..... Receptacle
- L. (4) - TH0721NK..... Trolley technology

If multiple receptacles for each junction block required, please contact Nova Customer Support (1-800-630-6682).

Electrical Components

	D x W x H (in.)	Model	List Price
Wall/floor Power feed	Power entry, transit. Wall plate included.		
		BE08496	\$160



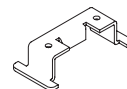
Ceiling power feed	Drops from ceiling. 144" tall. Power pole not included.	BE08092-3-144	\$265
---------------------------	--	---------------	-------

Liquid tite jumper	Use from wall or floor power entry to first block in workstation.	Model	List Price
	24 W	BE08682-3-24	\$207
	30 W	BE08682-3-30	\$217
	36 W	BE08682-3-36	\$227
	42 W	BE08682-3-42	\$239
	48 W	BE08682-3-48	\$257
	60 W	BE08682-3-60	\$284

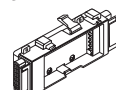
Raceway with junction block	Use to jump from workstation to workstation. Junction blocks fit into mounting brackets behind CPU storage. If all workstations same width, raceway with junction box same size. Workstations with two different widths: Add width of both workstations in inches, divide by 2; Select raceway with junction box equal or next larger width.	Model	List Price
	30 W	BE08068-3-2-30	\$181
	36 W	BE08068-3-2-36	\$194
	42 W	BE08068-3-2-42	\$204

	D x W x H (in.)	Model	List Price
Continued... Raceway with junction block	48 W	BE08068-3-2-48	\$221
	54 W	BE08068-3-2-54	\$233
	60 W	BE08068-3-2-60	\$244

Mounting bracket	Use to mount junction blocks on workstation. Must include 1-mounting bracket for every junction box location.	Model	List Price
		BE08077	\$5



Termination junction block	Two per workstation required. Use to mount junction blocks on workstation. Include as last junction box in electrical hardware run.	Model	List Price
		BE08381-3-2-00	\$107



Receptacle	15 AMP - Mounts inside junction block. Each circuit is capable of powering 5 junction blocks.	Model	List Price
	Powers 1-5 junction blocks	BE08065-3-A1C	\$34
	Powers 6-10 junction blocks	BE08065-3-A2C	\$34
	Powers 11-15 junction blocks	BE08065-3-A3C	\$34
	Powers 16-20 junction blocks	BE08065-3-A4C	\$34



To order, specify:

1. Base model
2. Laminate base and work surface colors
3. Options

Visual Display Options available:

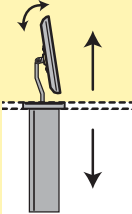
- The Trolley H-Class™
- Downview-Flat Panel Display
- Surface Mount Flat Panel Display
- Downview-CRT Monitor

Visual Display Options for 45 Series

Adding a visual display option does not affect Quick Ship lead times.
Factory installed keyboard-only option for 45 series available on page 93.

The Trolley H-Class™

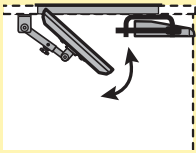
Maximum dimensions for flat panel display: 2¾" D x 16¼" W x 14" H (70mm D x 413mm W x 356mm H)



NOTE: Maximum distance from center of wall mount VESA plate to bottom of monitor is 6 ¾" (171mm)

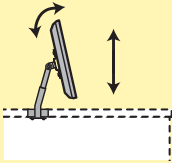
Downview-Flat Panel Display

Maximum dimensions for flat panel display:
 • 18x18 view port: 17"W x 18" H (432mm W x 457.2mm H)
 • 21x21 view port: 20 1/8"W x 19" H (511mm W x 483mm H)
 30" min. work surface depth



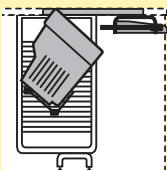
Surface Mount Flat Panel Display

Maximum weight for flat panel display: 21 lbs.
 Dimensions for flat panel display:
 Up to 24" diagonal wide screen



Downview-CRT Monitor

Maximum dimensions for CRT monitor:
 • 18x21 view port: 17½"D x 17"W x 18" H (444mm D x 432mm W x 457.2mm H)
 • 21x24 view port: 23½"D x 20 1/8"W x 19" H (597mm D x 511mm W x 483mm H)
 36" min. work surface depth



Model	List Price
With Nova Keyboard Drawer Trolley does not come installed in any unit, Nova Keyboard Drawer installed in assembled units only.	
TH0721NK	\$860
With Center Mount Articulating Keyboard Mechanism and Tray Trolley does not come installed in any unit, Center Mount Keyboard Tray installed in assembled units only.	
TH0721CK	\$1,030

- Optional keyboard choices
- Suitable for flat panel displays up to 19" diagonal
- One-touch activation
- Low voltage motor to lift & lower monitor
- Keyed lock for added security
- Provides vertical tilt adjustment in "up" position
- Durable metal enclosure under desktop
- Wire management system and power strip included

Model	List Price
With Nova Keyboard Drawer Downview Flat Panel Display & Nova Keyboard Drawer installed in assembled units only. Includes 18" x 18" view port, adjustable arm, and visor.	
FPA1818NK	\$360
Includes 21" x 21" view port, adjustable arm, and visor.	
FPA2121NK	\$420
With Dual Mount Adjustable Keyboard Tray Downview Flat Panel Display & Dual Mount Keyboard Tray installed in assembled units only. Includes 18" x 18" view port, adjustable arm, and visor.	
FPA1818AK	\$605
Includes 21" x 21" view port, adjustable arm, and visor.	
FPA2121AK	\$665

- 18x18 view port suitable for flat panel displays up to 19" diagonal
- 21x21 view port suitable for flat panel displays up to 21" diagonal
- Tinted, tempered glass viewport
- Keeps monitor under glass below work surface
- Wire management system and power strip included

Model	List Price
With Nova Keyboard Drawer Surface Mount Flat Panel Display does not come installed in any unit, Nova Keyboard Drawer installed in assembled units only.	
SMA0203NK	\$260
With Center Mount Articulating Keyboard Mechanism and Tray Surface Mount Flat Panel Display does not come installed in any unit, Center Mount Keyboard Tray installed in assembled units only.	
SMA0203CK	\$430

- Available in Learning Solutions series
- Optional keyboard choices
- Suitable for flat panel displays up to 24" diagonal wide screen
- Wire management system and power strip included

Model	List Price
With Nova Keyboard Drawer Downview CRT Monitor & Nova Keyboard Drawer installed in assembled units only. Includes 18" x 21" view port, CRT support system, and visor.	
CRT1821NK	\$360
Includes 21" x 24" view port, CRT support system, and visor.	
CRT2124NK	\$438
With Dual Mount Adjustable Keyboard Tray Downview CRT Monitor & Dual Mount Keyboard Tray installed in assembled units only. Includes 18" x 21" view port, CRT support system, and visor.	
CRT1821AK	\$605
Includes 21" x 24" view port, CRT support system, and visor.	
CRT2124AK	\$683

- 18x21 view port suitable for CRT monitors up to 17" diagonal
- 21x24 view port suitable for CRT monitors up to 21" diagonal
- Tinted, tempered glass view port
- Keeps monitor under glass below work surface
- Wire management system and power strip included

For details and installation specifications, refer to pages 124-128.

Laminate Selections

B = Base Color

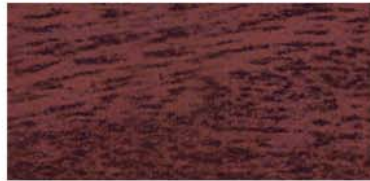
W = Work Surface Color

A = Accent Color (35, 75, 65, 25 Series)



Black (174)

B A



Empire Mahogany (531)

BWA



Slate Grey (129)

B A



Hard Rock Maple (577)

BWA



Fashion Grey (227)

BWA



English Oak (510)

BWA



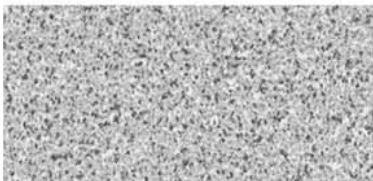
Graphite Nebula (030)

W



Wild Cherry (567)

BWA



Grey Nebula (044)

W



Natural Pear (604)

BWA



Carbon EV (376)

W



Tuscan Walnut (695)

BWA



Watermelon Brush (E71)

W



Citrus Brush (C59)

W



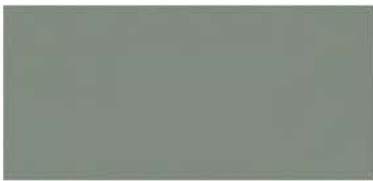
Sage Brush (D47)

W



Ocean Brush (A87)

W



Tuscan Olive (A29)

B A



Brittany Blue (076)

B A

Fabric Selections



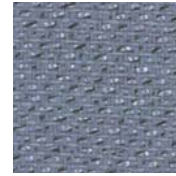
Parchment 1602



Misty 1595



Gravel 1599



Sky Blue 1613



Seafoam 1601



Lagoon 1616



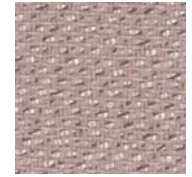
Moonbeam 1604



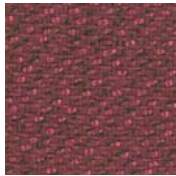
Sanddrift 1617



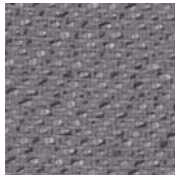
Terra Cotta 1611



Lilac 1597



Red Wine 1614



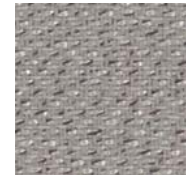
Twilight 1618



Flint 1619



Stardust 1606



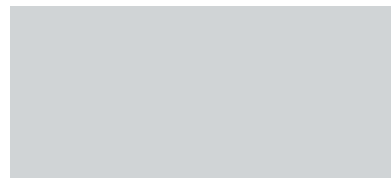
Silverleaf 1610

Matching Metal Colors

For Table Solutions - 25 Series only



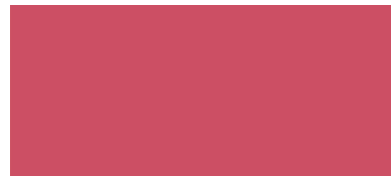
Polished Black
(PBL)



Polished Silver
(PSL)



Slate
(SLL)



Watermelon
(WML)



Ocean
(OCL)



Sage
(SAL)

Terms & Conditions

TERMS

Nova Solutions' (Nova) standard terms are net 30 days with approved credit. All prices are in U.S. Dollars. Prices herein are list prices effective with the date printed on the cover and supersede all other published price lists. Nova reserves the right to change prices without prior notice.

SELLING INFORMATION

Distribution of this price list does not in itself constitute an offer to sell. Offers can be received only from authorized Nova dealers.

PRICES

All prices listed are suggested retail prices, F.O.B. point of shipment, freight allowed (included in list prices) when shipping within the continental United States. Orders are accepted subject to prices and taxes prevailing at the time of shipment. Prices and taxes are subject to change without notice. If shipping date requested is more than 90 days from date of order, Nova shall have the right to use the published list prices effective at time of shipment.

ORDER PLACEMENT

Nova requires that all orders be in writing and accompanied by a layout/drawing. This is to insure that orders are complete, avoid errors, and avoid duplication. Please order products by model numbers specified to avoid any possible error. Telephone orders will not be processed for production without proper written confirmation. Nova cannot be held responsible for errors, omissions, and order duplication due to non-compliance with this procedure.

ORDERING INFORMATION

Mail, fax or e-mail all orders to:

Nova Solutions, Inc.
421 W. Industrial Avenue
P.O. Box 725
Effingham, Illinois 62401
Phone: 217-342-7070
Phone: 800-730-6682
Fax: 217-342-7006
Fax: 800-940-6682
E-mail: orders@novasolutionsinc.com

For prompt delivery, all orders must include:

- 1) Purchase order number
- 2) Attached layout/drawing
- 3) Billing address
- 4) Ship-to information and e-mail address
- 5) Special handling instructions
- 6) Complete model and finish number
- 7) Correct pricing

ORDER ACKNOWLEDGMENT

Please notify Nova immediately of any discrepancies in your order acknowledgement. The customer assumes all responsibility for order accuracy. Nova does not assume responsibility for errors caused by miscommunications from the customer. Orders are accepted only by issuance of Nova's formal acknowledgement. Orders are subject to the terms and conditions set forth herein, notwithstanding any variance in terms and conditions set forth on buyer's order forms. The order acknowledgement is the final confirmation of the agreement between the customer and Nova and supersedes all prior oral and written statements regarding the order. Once the order confirmation has been sent, only Nova approved and signed modifications will supercede the original confirmation.

QUOTATIONS

Quotations are valid for a period of ninety (90) days.

CHANGES

Nova reserves the right to make changes in design, specifications, construction, pricing or to discontinue products without prior notice. Prices shown in price book have priority over electronic catalog contents. Dimensions are approximate and are within normal industry standards.

ORDER CHANGES

Upon acknowledgement of an order, Nova may not be able to accept a change order. Nova will not accept changes on specials or customer items once production begins. Every attempt to make the requested change will be made and the following conditions apply:

- 1) Requested changes must be submitted in writing
- 2) Additional charges for materials, labor, and administrative costs may be charged
- 3) Completion dates may be rescheduled as required based on changes

ORDER CANCELLATIONS

Order cancellations must be requested in writing no later than 48 hours after receipt of original order and are subject to approval of Nova Solutions, Inc. Cancellations cannot be accepted otherwise. No cancellations accepted on Quick Ship orders

STORAGE

Orders in which shipment is delayed by the customer beyond 30 days after acknowledged shipping date are subject to a 3% weekly storage fee. Such transfer to storage will be deemed delivery to purchaser for all purposes including invoicing and payment.

SHIPPING INFORMATION

Freight

All shipments are Free On Board (F.O.B.) point of shipment, freight prepaid and allowed (included in list prices) when shipping within the continental United States. Please contact Customer Support for shipments to Alaska, Hawaii, and international. Nova reserves the right to select the most appropriate carrier and routing on all shipments.

Nova's product pricing is based on standard delivery between normal business hours Monday through Friday, excluding weekends and holidays. Any charge arising from failure to accept a shipment, rerouting while in transit, or carrier storage charges are not included in prices shown and will be billed to "Sold To" account number on the order. Detention charges will be incurred for untimely off-loading of product or other time delays incurred.

Any orders under list pricing shown below or requiring Special Delivery Services will incur additional charges. All such requirements must be noted on the purchase order. Examples of such services include:

Handling Fee (all non-UPSable shipped orders): All orders under \$5,000 list will incur \$100 handling fee

Multiple site deliveries: \$75 per order and location drop charge

Non-Standard Detention Time: \$75 per hour after two hours for each delivery location

Delivery Time (outside normal delivery hours): Contact Customer Support for charges and availability

Carriage

Nova reserves the right to choose the best method of delivery. All furniture is carefully inspected and securely packed before shipment. The carrier will only accept packages in good condition and agrees to deliver it in the same condition. Nova relinquishes all responsibility for goods shipped upon a signed receiving document from the carrier. It is the customer's responsibility to inspect merchandise immediately upon receipt.

SHIPPING INFORMATION (continued)

Loss, Damage or Delay

Nova shall not be liable for loss, damage, or delay resulting from causes beyond its reasonable control, including but not limited to fire, strike, inclement weather, accidents, or delay in transportation. In the event of a delay, due to any such cause, the delivery date will be postponed.

Shortages

If the shipment is not delivered in accordance with the quantity of cartons and packages shown on the Bill of Lading and/or Freight Bill, do not accept it until such shortages are noted on both documents.

FREIGHT CLAIMS

The merchandise is carefully packed and thoroughly inspected before shipment. The carrier upon acceptance of the shipment assumes responsibility for its safe delivery. Claims for loss or damage sustained in transit must therefore, be made upon the carrier as follows:

Concealed Loss or Damage

Concealed loss or damage means loss or damage that does not become apparent until the merchandise has been unpacked. The contents may be damaged in transit due to rough handling even though the carton may not show external damage. When damage is discovered upon unpacking, make a written request for inspection by the carrier's agent within 7 days of the delivery date. Then file a claim with the carrier since such damage is the carrier's responsibility.

Visible Damage or Shortage

Any external evidence of damage or shortage must be noted on the freight bill or express receipts and signed by the carrier's agent. Failure to adequately describe such external evidence of damage or shortage may result in the carrier refusing to honor a damage claim. The carrier will supply the form required to file such a claim. **All cartons and packaging must be kept with the merchandise at the delivered location. Failure to do so constitutes acceptance and a waiver of any such claim.**

RETURNS

Nova will not accept the return of any merchandise without a Returned Material Authorization (RMA). Special order items may not be returned for credit. No returns will be allowed after sixty (60) days from the ship date. If merchandise is approved for return, a restocking fee will be applied. Upon receipt, all returned merchandise will be thoroughly inspected, and any discrepancies will result in an adjustment to the amount of credit issued.

LIMITED LIFETIME WARRANTY

Nova Solutions warrants that its products are free from defects in materials and workmanship given normal use and care for the lifetime of service; proof of delivery being the only official document accepted by Nova for any claim. In the event that a product is used more than normal use, the applicable warranty period may be reduced.

This warranty is made by Nova Solutions to the original customer for as long as the original customer owns and uses the product. Nova Solutions' warranty is only valid if the products are given normal and proper use, and installed in accordance with Nova Solutions' installation and/or application guidelines, and installed by an authorized Nova Solutions' dealer or agent. Nova Solutions assumes no responsibility for repairs to products sustaining damages resulting from end-user modifications, attachments to a product, misuse, abuse, alteration, or negligence.

This warranty is subject to the limitations, exclusions, and other provisions provided below:

- Twenty-five years: Thermofused laminate
- Twenty years: Drawer slides
- Ten years: Locks
- Five years: Downview technology with flat panel monitor or CRT, Flat Panel Display Security Arm, high pressure laminate, castors, fabrics, metal frame doors, electrical components, PVC extrusions, adjustable surface mechanisms, and accessories.
- Two years: The Trolley H-Class with Intelligent Motion Technology: first year of warranty for parts and labor; second year limited parts warranty. Variation in finishes is characteristic, in terms of color & texture, and does not constitute a defect.

As your manufacturer, we stand behind our quality products and will do everything possible to resolve any problems that might arise within the terms of this warranty.

For more information, or to file a warranty claim, please contact Nova Solutions' Customer Support at 800-730-6682.

GOVERNING LAWS

This contract shall be construed and governed in accordance with the laws and regulations of the state of Illinois.

Sample Purchase Order

Customer Information

Customer Name
 Address
 City, State, Zip
 Phone #
 Fax #
 E-mail Address

Purchase Order # _____

Date Issued: _____

Vendor Information

Nova Solutions, Inc.
 P.O. Box 725
 Effingham, IL, USA 62401

Ship To:

Name (your point of destination)
 Address (your point of destination)
 City, State, Zip
 Phone #
 Delivery Contact Name

	Model Numbers	Description	Qty	List Price	Ext. List Price
Base Model Number:	75-RD307230BB	Rectangle desk, 30x72x30 Box/Box/File right and left	1	\$1,417	\$1,417
Color:	695 695 695	Tuscan Walnut (Base, Work Surface & Accent)			
Drawer or Door Pull Style/Finish:	SM	Steel / Chrome Matt			
Edge Detail:	P	Flat PVC edge			
Options:	AC-PS1125	Power strip	1	\$132	\$132
Visual Display:	FPA1818NK	Downview-Flat panel display	1	\$360	\$360
Accessories:	RWG01	Round wire grommet	2	\$68	\$136
		Subtotal		\$1,977	
		Total			\$2,045

Please add any taggings:

Example: Computer classroom #104

Please add point of contact, phone number and e-mail address:

Example: Debbie Smith, 800-555-5678, dsmith@domainname.com

Please add any shipping or special instructions:

Example: Please call Doug at 555-687-5309, 24 hours before delivery

Example: Must have delivery by 12/31

Notes





NOVA Solutions, Inc.

421 W. Industrial Avenue
Effingham, IL 62401

Phone: 800-730-6682

Fax: 800-940-6682

www.novadesk.com

info@novasolutionsinc.com



© 2007, NOVA Solutions, Inc.

Reorder #: CT002

Issue Date: 05/15/07 - Rev. 1

NOVA Solutions products are protected by various
U.S. and foreign patents issued and/or pending.