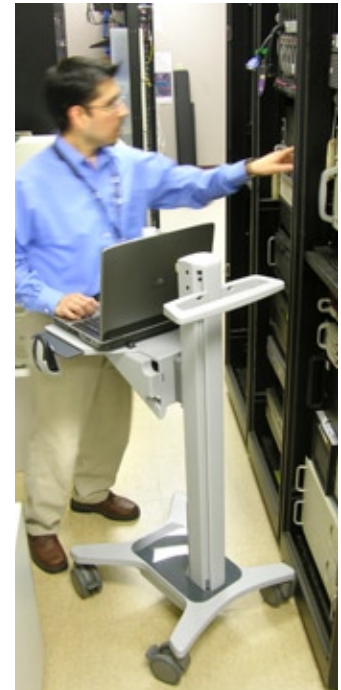




# Ergotron®

## Neo-Flex™ Mobile WorkSpace



### Highlights

- Flexible, open architecture is ready for the computer equipment of today and tomorrow
- Constant Force (CF) patented lift-and-pivot motion technology provides fluid, one-touch adjustment
- Work sitting or standing through its ergonomic 20-inch (51 cm) height adjustment range
- Increased comfort and productivity for personalized viewing using five-inch (13 cm), independent LCD height adjustment, 25° tilt and portrait-to-landscape rotation
- Safe and neat routing of cables through the expansive cable management storage area
- 2008 CEA Design & Engineering Award, 2008 ADEX Award



### Affordable, mobile ergonomic computing

Designed for manufacturing floors, clinical documentation, labs, distribution centers, and any other high activity areas, the Neo-Flex Mobile WorkSpace transforms any space into a productive computing environment. This compact cart is the perfect platform for true point-of-need data input, which increases accuracy and productivity while supporting wireless initiatives in any facility.

Designed with touch screen applications in mind, the Neo-Flex Mobile WorkSpace can instantly become a mobile kiosk. Improve viewing comfort and enhance productivity with effortless Constant Force (CF) height adjustment. The ergonomic 20-inch (51 cm) height range enables comfortable data entry whether an employee is seated or standing. When used with an LCD, an additional five inches (13 cm) of independent height adjustment and 25° screen tilt benefits all users, including those who wear progressive lenses.



1. Patented Constant Force (CF) lift-and-pivot motion technology provides 20 inches (51 cm) of effortless height adjustment
2. 90° portrait/landscape rotation and 25° tilt; VESA® compliant
3. Laptop security system
4. Lithium-ion battery holder
5. Convenient rear handle
6. Lift range: LCD/worksurface adjusts 20" (51 cm) in tandem; LCD adjusts 5" (13 cm) independently; maximum LCD height adjustment is 25" (63 cm)
7. Barcode scanner holder provides easy access to hand-held scanner
8. Cable management storage box
9. Integrated worksurface/keyboard with right/left mouse tray
10. Durable, easy-to-clean exterior composed of aluminum, high-grade plastic and zinc-plated steel
11. Four dual casters—lockable front casters

Optional accessories include utility shelf, universal t-slot bracket interface, locking drawers, gel wrist rest, external cord reel, power strip and interface brackets for Motion Computing tablet PCs

Three-year warranty



|                       |   |
|-----------------------|---|
| Product Names         | Neo-Flex LCD Mobile WorkSpace, Neo-Flex Laptop Mobile WorkSpace   |
| Part Number           | LCD 24-182-055, Laptop 24-186-055   |
| Product Includes      | Integrated worksurface/keyboard tray with left/right mouse tray, mouse holder, scanner holder bracket, rear handle, cable storage box, four dual casters (two locking), 5" (13 cm) lift monitor pivot, CPU holder                       |
| Shipping Dimensions   | 45.5"H x 19.75"W x 24"D (1156 x 502 x 610 mm)   |
| Shipping Weight       | 68 lbs (30.9 kg)  |
| Warranty              | 3 years   |
| Weight Capacity       | Total load of height-adjustment assembly: 28 lbs (12.7 kg)<br>Includes contents of Worksurface, Cable Storage Box and LCD Pivot or Battery Holder<br>LCD Pivot capacity: 5–18 lbs (2.3–8.1 kg)<br>CPU Holder capacity: 30 lbs (13.6 kg) |
| Compatible Display(s) | VESA FDMI, MIS-D, 75/100, C (hole pattern 100 x 100 mm & 75 x 75 mm)  |

## Ergotron Service Program: Save time and money by allowing the experts to integrate your Neo-Flex Carts

### Cart Integration

25 cart minimum

SRVC-NFI-01A  
25–99

SRVC-NFI-01B  
100+

- Preventive maintenance check
- Set-up and configure carts
- Tailor configurations to user's specific hardware
- Unpack carts, monitors, CPUs, laptops, keyboards, mice, etc.
- Prepare carts for hardware installation
- Install hardware (carts, monitors, CPUs, laptops, keyboards, mice, etc.)
- Adjust all cart movements (counterbalance per weight of hardware)
- Route and organize cabling
- Follow-up: contact to ensure satisfaction after completion of integration

All phases of Cart Integration performed by a certified service provider, including:

Cart preparation for hardware installation

Hardware installation (carts, monitors, CPUs, laptops, keyboards, mice, etc.)

Adjustment of cart components (counterbalancing per weight of hardware)

Cable routing

Initial preventive maintenance check

Thirty-day warranty, starts on final day of service visit

© 2008 Ergotron, Inc. rev. 04/22/2008 870-05-073-EA Content is subject to change without notification

#### Americas Sales and Corporate Headquarters

St. Paul, MN USA  
(800) 888-8458  
+1-651-681-7600  
www.ergotron.com  
sales@ergotron.com

#### EMEA Sales

Amersfoort, The Netherlands  
+31 33 45 45 600  
www.ergotron.com  
info.eu@ergotron.com

#### APAC Sales

Singapore  
www.ergotron.com  
info.apac@ergotron.com

#### Worldwide OEM Sales

www.ergotron.com  
info.oem@ergotron.com

